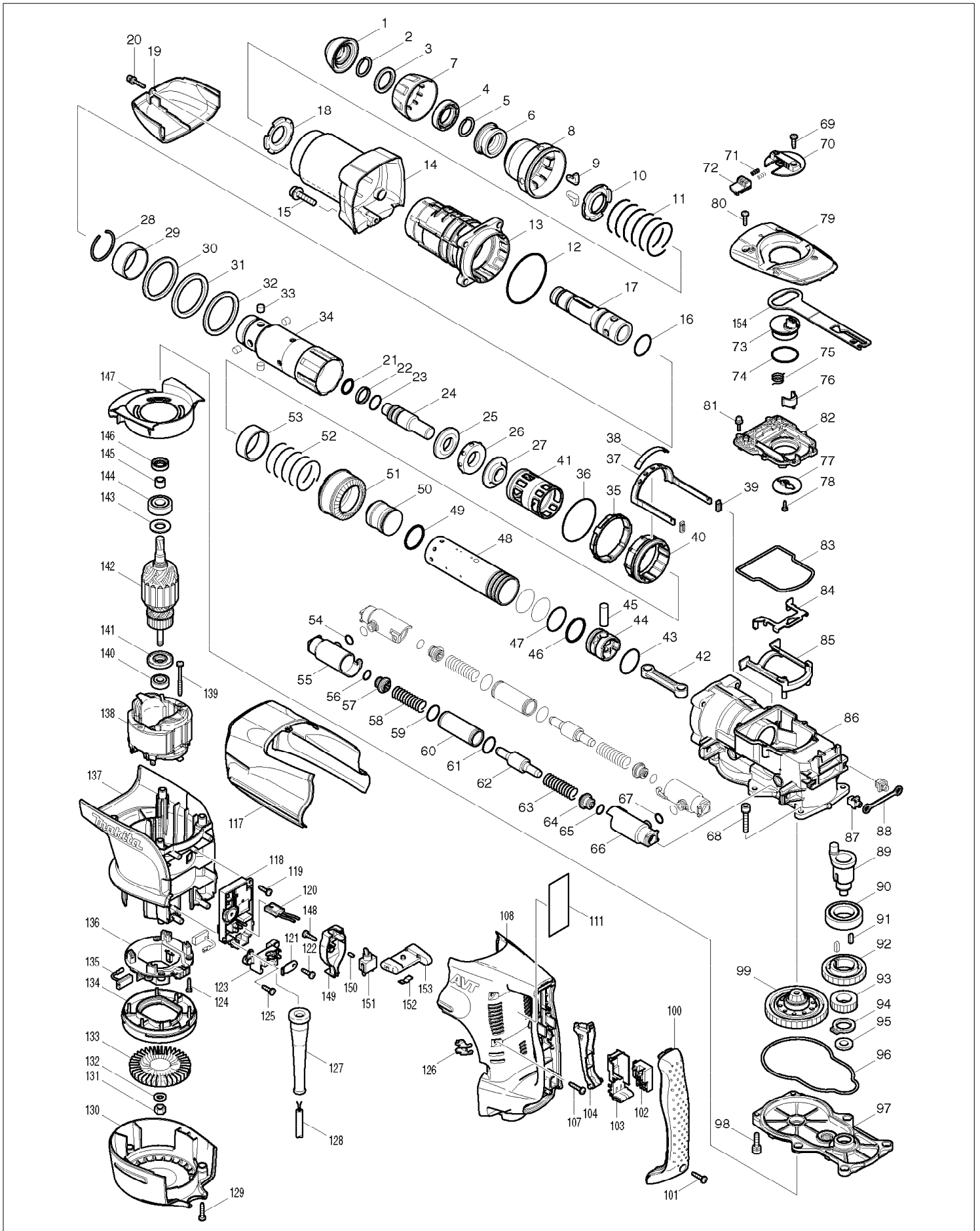


SERVICE DRAWING

MODEL NO. HR5210C



SPARE PARTS LIST

MODEL NO. HR5210C

| ITEM | PART NO. | DESCRIPTION | QTY | NOTE |
|------|----------|-----------------------------|-----|------|
| 001 | 286285-4 | TOOL HOLDER CAP | 1 | |
| 002 | 233948-3 | RING SPRING 25 | 1 | |
| 003 | 257280-1 | RING 28 | 1 | |
| 004 | 419002-9 | SPACER | 1 | |
| 005 | 233948-3 | RING SPRING 25 | 1 | |
| 006 | 324752-2 | CHUCK RING | 1 | |
| 007 | 419778-8 | CHACK COVER | 1 | |
| 008 | 419779-6 | RELEASE COVER | 1 | |
| 009 | 310178-4 | TOOL RETAINER | 2 | |
| 010 | 345804-6 | SPRING GUIDE | 1 | |
| 011 | 233496-2 | COMPRESSION SPRING 49 | 1 | |
| 012 | 213766-5 | O-RING 78 | 1 | |
| 013 | 158175-0 | BARREL COMPLETE | 1 | |
| 014 | 158179-2 | BARREL COVER COMPLETE | 1 | |
| 015 | 922456-6 | HEX. SOCKET HEAD BOLT M8X35 | 4 | |
| 016 | 213492-6 | O-RING 32 | 1 | |
| 017 | 324740-9 | TOOL HOLDER A | 1 | |
| 018 | 345804-6 | SPRING GUIDE | 1 | |
| 019 | 419791-6 | GEAR HOUSING COVER | 1 | |
| 020 | 922148-7 | HEX. SOCKET HEAD BOLT M4X25 | 1 | |
| 021 | 213274-6 | O RING 18 | 1 | |
| 022 | 213392-0 | FLUORIDE RING 25 | 1 | |
| 023 | 213317-4 | O RING 20 | 1 | |
| 024 | 324753-0 | IMPACT BOLT | 1 | |
| 025 | 324756-4 | RING 20 | 1 | |
| 026 | 424000-0 | RUBBUR RING 24 | 1 | |
| 027 | 324757-2 | COLLAR SLEEVE 20 | 1 | |
| 028 | 233949-1 | RING SPRING 44 | 1 | |
| 029 | 257282-7 | RING 47 | 1 | |
| 030 | 267287-9 | FLAT WASHER 57 | 1 | |
| 031 | 262122-6 | URETAHNE RING 57 | 1 | |
| 032 | 267287-9 | FLAT WASHER 57 | 1 | |
| 033 | 256265-4 | PIN 10 | 4 | |
| 034 | 324741-7 | TOOL HOLDER B | 1 | |
| 035 | 419776-2 | LOCK SLEEVE | 1 | |
| 036 | 213654-6 | O RING 60 | 1 | |
| 037 | 165459-9 | RINK ARM | 1 | |
| 038 | 419775-4 | LINK ARM GUIDE | 1 | |
| 039 | 424024-6 | SEAL PLATE | 2 | |
| 040 | 313138-5 | DRIVING SLEEVE | 1 | |
| 041 | 419780-1 | SLIDE SLEEVE | 1 | |
| 042 | 419772-0 | CONECTING ROD | 1 | |
| 043 | 213460-9 | O RING 35 | 1 | |
| 044 | 419771-2 | PISTON | 1 | |
| 045 | 268121-6 | PIN 12 | 1 | |
| 046 | 213482-9 | O RING 34 | 1 | |
| 047 | 213510-0 | O RING 36 | 3 | |
| 048 | 331748-6 | CYLINDER 40 | 1 | |
| 049 | 213482-9 | O RING 34 | 1 | |
| 050 | 324754-8 | STRIKER | 1 | |
| 051 | 227511-2 | STRAIGHT BEVEL GEAR 33 | 1 | |
| 052 | 233498-8 | COMPRESSION SPRING 46 | 1 | |
| 053 | 257281-9 | RING 45 | 1 | |
| 054 | 213118-0 | O RING 12 | 2 | |
| 055 | 318124-1 | PIPE HOLDER | 2 | |
| 056 | 213118-0 | O RING 12 | 2 | |
| 057 | 419773-8 | SPRING GUIDE | 2 | |
| 058 | 233497-0 | COMPRESSION SPRING 15 | 2 | |
| 059 | 213953-6 | O RING 24 | 2 | |
| 060 | 331745-2 | PIPE 22 | 2 | |
| 061 | 213953-6 | O RING 24 | 2 | |

SPARE PARTS LIST

MODEL NO. HR5210C

| ITEM | PART NO. | DESCRIPTION | QTY | NOTE |
|------|----------|-----------------------------|-----|------|
| 062 | 324755-6 | COUNTER WEIGHT | 2 | |
| 063 | 233497-0 | COMPRESSION SPRING 15 | 2 | |
| 064 | 419773-8 | SPRING GUIDE | 2 | |
| 065 | 213118-0 | O RING 12 | 2 | |
| 066 | 318124-1 | PIPE HOLDER | 2 | |
| 067 | 213118-0 | O RING 12 | 2 | |
| 068 | 922361-7 | HEX. SOCKET HEAD BOLT M6X40 | 4 | |
| 069 | 266192-7 | TAPPING SCREW 4X14 | 1 | |
| 070 | 419020-7 | CHANGE LEVER | 1 | |
| 071 | 233436-0 | COMPRESSION SPRING 3 | 2 | |
| 072 | 419777-0 | LOCK BUTTON | 1 | |
| 073 | 450687-2 | CRANK LEVER | 1 | |
| 074 | 213534-6 | O RING 36 | 1 | |
| 075 | 233506-5 | TORSION SPRING 16 | 1 | |
| 076 | 310207-3 | LINK LEVER | 1 | |
| 077 | 345778-1 | RETAINER PLATE | 1 | |
| 078 | 265014-8 | + PAN HEAD SCREW M4X12 | 1 | |
| 079 | 318130-6 | CRANK CAP COVER | 1 | |
| 080 | 266192-7 | TAPPING SCREW 4X14 | 2 | |
| 081 | 911133-5 | PAN HEAD SCREW M4X18 | 6 | |
| 082 | 419789-3 | CRANK CAP | 1 | |
| 083 | 421998-2 | SEAL RING | 1 | |
| 084 | 345779-9 | LINK PLATE | 1 | |
| 085 | 419781-9 | LINK PLATE GUIDE | 1 | |
| 086 | 158176-8 | CRANK HOUSING COMPLETE | 1 | |
| 087 | 419008-7 | FIX GUIDE | 2 | |
| 088 | 423366-5 | CUSHION PLATE | 1 | |
| 089 | 324739-4 | CRANK SHAFT | 1 | |
| 090 | 211418-2 | BALL BEARING 6006LLU | 1 | |
| 091 | 254229-2 | KEY 5 | 2 | |
| 092 | 226646-6 | HELICAL GEAR 47 | 1 | |
| 093 | 227176-0 | SPUR GEAR 24 | 1 | |
| 094 | 961102-6 | RETAINING RING S-22 | 1 | |
| 095 | 253843-1 | FLAT WASHER 12 | 1 | |
| 096 | 421999-0 | SEAL RING | 1 | |
| 097 | 158178-4 | GEAR HOUSING COMPLETE | 1 | |
| 098 | 922341-3 | HEX. SOCKET HEAD BOLT M6X25 | 2 | |
| 099 | 125374-9 | TORQUE LIMITER ASS'Y | 1 | |
| 100 | 419796-6 | HANDLE COVER | 1 | |
| 101 | 265995-6 | TAPPING SCREW 4X18 | 1 | |
| 102 | 650567-4 | SWITCH TG73B-1 | 1 | |
| 103 | 154626-1 | SWITCH HOLDER COMPLETE | 1 | |
| 104 | 419028-1 | SWITCH LEVER | 1 | |
| 107 | 266041-8 | TAPPING SCREW 5X25 | 6 | |
| 108 | 419800-1 | HANDLE | 1 | |
| 111 | 863365-9 | HR5210C NAME PLATE | 1 | |
| 117 | 419793-2 | CRANK HOUSING COVER | 1 | |
| 118 | 631727-7 | CONTROLLER | 1 | |
| 119 | 266192-7 | TAPPING SCREW 4X14 | 1 | |
| 120 | 638510-3 | LEAD UNIT | 1 | |
| 121 | 687169-3 | STRAIN RELIEF | 1 | |
| 122 | 266192-7 | TAPPING SCREW 4X14 | 1 | |
| 123 | 419024-9 | CORD CLAMP BASE | 1 | |
| 124 | 265995-6 | TAPPING SCREW 4X18 | 4 | |
| 125 | 266192-7 | TAPPING SCREW 4X14 | 1 | |
| 126 | 419774-6 | LENS | 1 | |
| 127 | 682560-0 | CORD GUARD 10 | 1 | |
| 128 | 695123-3 | POWER SUPPLY CORD 1.5-2-4.0 | 1 | |
| 129 | 266041-8 | TAPPING SCREW 5X25 | 3 | |
| 130 | 419790-8 | REAR COVER | 1 | |
| 131 | 252178-7 | HEX. NUT M8-12 | 1 | |

SPARE PARTS LIST

MODEL NO. HR5210C

| ITEM | PART NO. | DESCRIPTION | QTY | NOTE |
|------|----------|---|-----|------|
| 132 | 253165-9 | FLAT WASHER 8 | 1 | |
| 133 | 240016-5 | FAN 90 | 1 | |
| 134 | 419782-7 | FAN GUIDE | 1 | |
| 135 | 194412-8 | CARBON BRUSH CB-171 | 1 | |
| 136 | 638447-4 | BRUSH HOLDER UNIT | 1 | |
| 137 | 419795-8 | MOTOR HOUSING | 1 | |
| 138 | 636303-2 | FIELD 220-240V | 1 | |
| 139 | 266095-5 | TAPPING SCREW 5X55 | 2 | |
| 140 | 210059-1 | BALL BEARING 6000DDW | 1 | |
| 141 | 681642-5 | INSULATION WASHER | 1 | |
| 142 | 516993-6 | ARMATURE ASS'Y 220-240V INC. 140,141,145 | 1 | |
| 143 | 267025-9 | FLAT WASHER 15 | 1 | |
| 144 | 211238-4 | BALL BEARING 6202LLU | 1 | |
| 145 | 331596-3 | SLEEVE 12 | 1 | |
| 146 | 213231-4 | OIL SEAL 15 | 1 | |
| 147 | 419788-5 | BAFFLE PLATE | 1 | |
| 148 | 266192-7 | TAPPING SCREW 4X14 | 1 | |
| 149 | 419786-9 | SWITCH BOX | 1 | |
| 150 | 263027-3 | RUBBER PIN 4 | 1 | |
| 151 | 651418-4 | SWITCH ST115A-40 | 1 | |
| 152 | 232209-8 | LEAF SPRING | 1 | |
| 153 | 154635-0 | SLIDE LEVER COMPLETE | 1 | |
| 154 | 419785-1 | CONTROL PLATE | 1 | |
| 155 | 819362-3 | CLEAR LABEL | 1 | |
| A01 | 158131-0 | GRIP 36 COMPLETE | 1 | |
| A02 | 158275-6 | PLASTIC CARRYING CASE COMPLETE | 1 | |
| A03 | 181573-3 | GREASE VESSEL 93G | 1 | |
| A04 | 135269-8 | SIDE HANDLE 82 ASS'Y | 1 | |
| A05 | 265701-9 | SCREW M6X14 | 1 | |
| A06 | 266163-4 | CUP SQUARE NECK BOLT M8X80 | 1 | |
| A07 | 321248-4 | DEPTH GAUGE | 1 | |
| A08 | 344492-6 | PLATE | 1 | |
| A09 | 345780-4 | GRIP SPRING 82 | 1 | |
| A10 | 419792-4 | SIDE GRIP BASE 82 | 1 | |
| A11 | 443122-7 | CLOTH | 1 | |
| A12 | 931302-2 | HEX. NUT M6 | 1 | |
| A13 | 805250-0 | HR5210C MODEL NO.LABEL | 1 | |