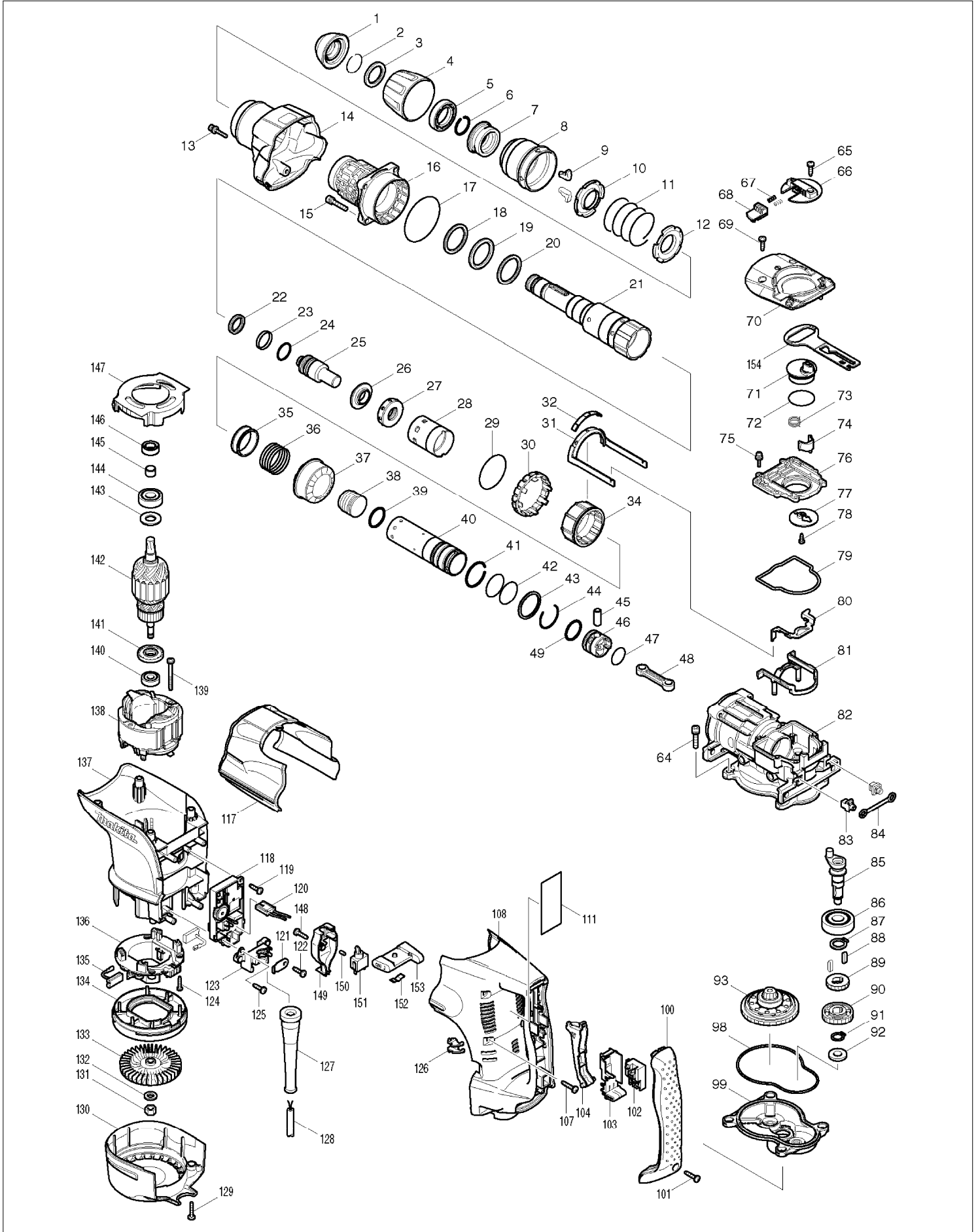


# SERVICE DRAWING

MODEL NO. HR4501C



# SPARE PARTS LIST

MODEL NO. HR4501C

ITEM	PART NO.	DESCRIPTION	QTY	NOTE
001	*****	*****	***	*****
002	233948-3	RING SPRING 25	1	
003	257280-1	RING 28	1	
004	450064-8	CHUCK COVER	1	
005	419002-9	SPACER	1	
006	233948-3	RING SPRING 25	1	
007	324752-2	CHUCK RING	1	
008	450030-5	RELEASE COVER	1	
009	310178-4	TOOL RETAINER	2	
010	345804-6	SPRING GUIDE	1	
011	233496-2	COMPRESSION SPRING 49	1	
012	345804-6	SPRING GUIDE	1	
013	922148-7	HEX. SOCKET HEAD BOLT M4X25	1	
014	158301-1	BARREL COVER COMPLETE	1	
015	922353-6	HEX.SOCKET HEAD BOLT M6X30	4	
016	*****	*****	***	*****
017	213754-2	O RING 71	1	
018	267357-4	FLAT WASHER 36	1	
019	262135-7	RUBBER RING 36	1	
020	267357-4	FLAT WASHER 36	1	
021	324872-2	TOOL HOLDER	1	
022	213980-3	X-RING 21	1	
023	213431-6	FLUORIDE RING 28	1	
024	213394-6	O RING 23	1	
025	324802-3	IMPACT BOLT	1	
026	324805-7	RING 19	1	
027	424032-7	RUBBER RING 20	1	
028	450024-0	SLIDE SLEEVE	1	
029	213656-2	O RING 53	1	
030	450031-3	LOCK SLEEVE	1	
031	165465-4	LINK ARM	1	
032	450032-1	LINK ARM GUIDE	1	
034	324800-7	DRIVING SLEEVE	1	
035	331599-7	RING 38	1	
036	234024-6	COMPRESSION SPRING 39	1	
037	227526-9	STRAIGHT BEVEL GEAR 35	1	
038	324804-9	STRIKER	1	
039	213981-1	O-RING 27	1	
040	324803-1	CYLINDER 34	1	
041	233956-4	RING SPRING 37	1	
042	213460-9	O RING 35	2	
043	257283-5	RING 38	1	
044	233955-6	RING SPRING 36	1	
045	331598-9	PIPE 10	1	
046	450025-8	PISTON	1	
047	213407-3	O RING 26	1	
048	450026-6	CONECTING ROD	1	
049	213981-1	O-RING 27	1	
064	922353-6	HEX.SOCKET HEAD BOLT M6X30	4	
065	266192-7	TAPPING SCREW 4X14	1	
066	419020-7	CHANGE LEVER	1	
067	233436-0	COMPRESSION SPRING 3	2	
068	419009-5	LOCK BUTTON	1	
069	266192-7	TAPPING SCREW 4X14	2	
070	318171-2	CRANK CAP COVER	1	
071	*****	*****	***	*****
072	*****	*****	***	*****
073	233506-5	TORSION SPRING 16	1	
074	310207-3	LINK LEVER	1	
075	911133-5	PAN HEAD SCREW M4X18	6	
076	450034-7	CRANK CAP	1	

# SPARE PARTS LIST

MODEL NO. HR4501C

ITEM	PART NO.	DESCRIPTION	QTY	NOTE
077	345778-1	RETAINER PLATE	1	
078	*****	*****	***	*****
079	424034-3	SEAL RING	1	
080	345822-4	LINK PLATE	1	
081	450029-0	LINK PLATE GUIDE	1	
082	158298-4	CRANK HOUSING COMPLETE	1	
083	419008-7	FIX GUIDE	2	
084	423345-3	CUSHION PLATE	1	
085	324801-5	CRANK SHAFT	1	
086	211279-0	BALL BEARING 6303LLU	1	
087	961057-5	RETAINING RING S-17	1	
088	254220-0	KEY 5	2	
089	227181-7	SPUR GEAR 19	1	
090	226655-5	HELICAL GEAR 36	1	
091	961054-1	RETAINING RING S-14	1	
092	253180-3	FLAT WASHER 10	1	
093	125415-1	TORQUE LIMITER ASS'Y	1	
098	424033-5	SEAL RING	1	
099	158299-2	GEAR HOUSING COMPLETE	1	
100	419796-6	HANDLE COVER	1	
101	265995-6	TAPPING SCREW 4X18	1	
102	650567-4	SWITCH TG73B-1	1	
103	154626-1	SWITCH HOLDER COMPLETE	1	
104	419028-1	SWITCH LEVER	1	
107	266041-8	TAPPING SCREW 5X25	6	
108	450039-7	HANDLE	1	
111	864088-2	HR4501C NAME PLATE	1	
117	450037-1	CRANK HOUSING COVER	1	
118	631751-0	CONTROLLER	1	
119	266192-7	TAPPING SCREW 4X14	1	
120	638510-3	LEAD UNIT	1	
121	687169-3	STRAIN RELIEF	1	
122	266192-7	TAPPING SCREW 4X14	1	
123	419024-9	CORD CLAMP BASE	1	
124	265995-6	TAPPING SCREW 4X18	4	
125	266192-7	TAPPING SCREW 4X14	1	
126	419774-6	LENS	1	
127	682560-0	CORD GUARD 10	1	
128	*****	*****	***	*****
129	266041-8	TAPPING SCREW 5X25	2	
130	450035-5	REAR COVER	1	
131	252178-7	HEX. NUT M8-12	1	
132	253165-9	FLAT WASHER 8	1	
133	240016-5	FAN 90	1	
134	419782-7	FAN GUIDE	1	
135	194412-8	CARBON BRUSH CB-171	1	
136	638447-4	BRUSH HOLDER UNIT	1	
137	450041-0	MOTOR HOUSING	1	
138	636313-9	FIELD 220-240V	1	
139	266046-8	TAPPING SCREW 5X50	2	
140	210059-1	BALL BEARING 6000DDW	1	
141	681642-5	INSULATION WASHER	1	
142	517768-6	ARMATURE ASS'Y 220-240V INC. 140,141,145	1	
143	267025-9	FLAT WASHER 15	1	
144	211238-4	BALL BEARING 6202LLU	1	
145	331596-3	SLEEVE 12	1	
146	213231-4	OIL SEAL 15	1	
147	450033-9	BAFFLE PLATE	1	
148	266192-7	TAPPING SCREW 4X14	1	
149	419786-9	SWITCH BOX	1	

# SPARE PARTS LIST

MODEL NO. HR4501C

ITEM	PART NO.	DESCRIPTION	QTY	NOTE
150	263027-3	RUBBER PIN 4	1	
151	651418-4	SWITCH ST115A-40	1	
152	232209-8	LEAF SPRING	1	
153	154635-0	SLIDE LEVER COMPLETE	1	
154	450042-8	CONTROL PLATE	1	
155	331840-8	SHOULDER SLEEVE 19	1	
156	819362-3	CLEAR LABEL	1	
A01	158131-0	GRIP 36 COMPLETE	1	
A02	*****	*****	***	*****
A03	*****	*****	***	*****
A04	134890-0	SIDE HANDLE 68 ASS'Y	1	
A05	443122-7	CLOTH	1	
A06	265701-9	SCREW M6X14	1	
A07	266163-4	CUP SQUARE NECK BOLT M8X80	1	
A08	321248-4	DEPTH GAUGE	1	
A09	344491-8	GRIP SPRING 68	1	
A10	344492-6	PLATE	1	
A11	416299-1	SIDE GRIP BASE 68	1	
A12	931302-2	HEX. NUT M6	1	
A14	892060-4	HR4501C PLASTIC CASE LABEL	2	