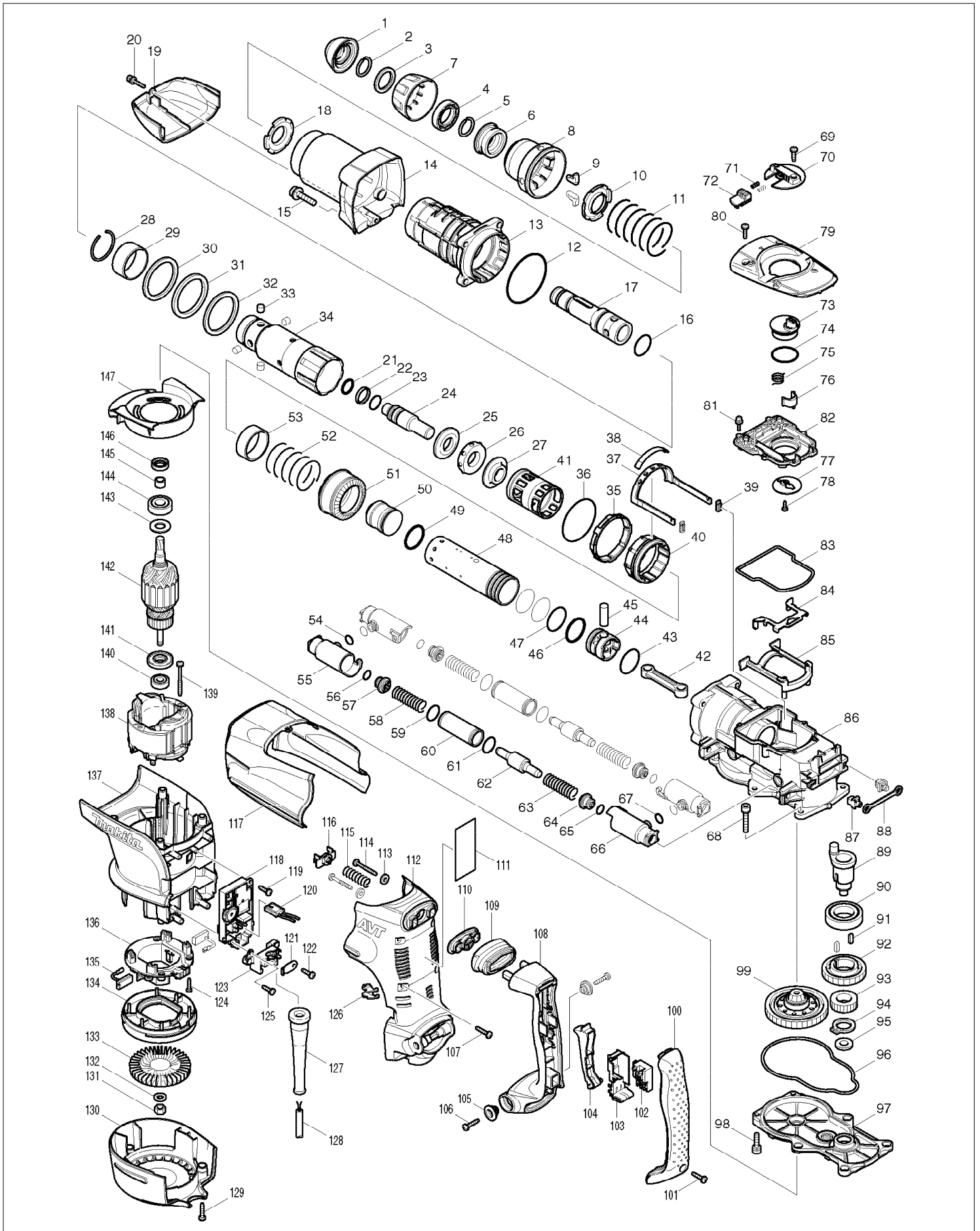


SERVICE DRAWING

MODEL NO. HR5211C



SPARE PARTS LIST

MODEL NO. HR5211C

ITEM	PART NO.	DESCRIPTION	QTY	NOTE
001	286285-4	TOOL HOLDER CAP	1	
002	233948-3	RING SPRING 25	1	
003	257280-1	RING 28	1	
004	419002-9	SPACER	1	
005	233948-3	RING SPRING 25	1	
006	324752-2	CHUCK RING	1	
007	419778-8	CHACK COVER	1	
008	419779-6	RELEASE COVER	1	
009	310178-4	TOOL RETAINER	2	
010	345804-6	SPRING GUIDE	1	
011	233496-2	COMPRESSION SPRING 49	1	
012	213766-5	O-RING 78	1	
013	158175-0	BARREL COMPLETE	1	
014	158179-2	BARREL COVER COMPLETE	1	
015	922456-6	HEX. SOCKET HEAD BOLT M8X35	4	
016	213492-6	O-RING 32	1	
017	324740-9	TOOL HOLDER A	1	
018	345804-6	SPRING GUIDE	1	
019	419791-6	GEAR HOUSING COVER	1	
020	922148-7	HEX. SOCKET HEAD BOLT M4X25	1	
021	213274-6	O RING 18	1	
022	213392-0	FLUORIDE RING 25	1	
023	213317-4	O RING 20	1	
024	324753-0	IMPACT BOLT	1	
025	324756-4	RING 20	1	
026	424000-0	RUBBUR RING 24	1	
027	324757-2	COLLAR SLEEVE 20	1	
028	233949-1	RING SPRING 44	1	
029	257282-7	RING 47	1	
030	267287-9	FLAT WASHER 57	1	
031	262122-6	URETAHNE RING 57	1	
032	267287-9	FLAT WASHER 57	1	
033	256265-4	PIN 10	4	
034	324741-7	TOOL HOLDER B	1	
035	419776-2	LOCK SLEEVE	1	
036	213654-6	O RING 60	1	
037	165459-9	RINK ARM	1	
038	419775-4	LINK ARM GUIDE	1	
039	424024-6	SEAL PLATE	2	
040	313138-5	DRIVING SLEEVE	1	
041	419780-1	SLIDE SLEEVE	1	
042	419772-0	CONECTING ROD	1	
043	213460-9	O RING 35	1	
044	419771-2	PISTON	1	
045	268121-6	PIN 12	1	
046	213482-9	O RING 34	1	
047	213510-0	O RING 36	3	
048	331748-6	CYLINDER 40	1	
049	213482-9	O RING 34	1	
050	324754-8	STRIKER	1	
051	227511-2	STRAIGHT BEVEL GEAR 33	1	
052	233498-8	COMPRESSION SPRING 46	1	
053	257281-9	RING 45	1	
054	213118-0	O RING 12	2	
055	318124-1	PIPE HOLDER	2	
056	213118-0	O RING 12	2	
057	419773-8	SPRING GUIDE	2	
058	233497-0	COMPRESSION SPRING 15	2	
059	213953-6	O RING 24	2	
060	331745-2	PIPE 22	2	
061	213953-6	O RING 24	2	

SPARE PARTS LIST

MODEL NO. HR5211C

ITEM	PART NO.	DESCRIPTION	QTY	NOTE
062	324755-6	COUNTER WEIGHT	2	
063	233497-0	COMPRESSION SPRING 15	2	
064	419773-8	SPRING GUIDE	2	
065	213118-0	O RING 12	2	
066	318124-1	PIPE HOLDER	2	
067	213118-0	O RING 12	2	
068	922361-7	HEX. SOCKET HEAD BOLT M6X40	4	
069	266192-7	TAPPING SCREW 4X14	1	
070	419020-7	CHANGE LEVER	1	
071	233436-0	COMPRESSION SPRING 3	2	
072	419777-0	LOCK BUTTON	1	
073	450687-2	CRANK LEVER	1	
074	213534-6	O RING 36	1	
075	233506-5	TORSION SPRING 16	1	
076	310207-3	LINK LEVER	1	
077	345778-1	RETAINER PLATE	1	
078	265014-8	+ PAN HEAD SCREW M4X12	1	
079	318129-1	CRANK CAP COVER	1	
080	266192-7	TAPPING SCREW 4X14	2	
081	911133-5	PAN HEAD SCREW M4X18	6	
082	419789-3	CRANK CAP	1	
083	421998-2	SEAL RING	1	
084	345779-9	LINK PLATE	1	
085	419781-9	LINK PLATE GUIDE	1	
086	158176-8	CRANK HOUSING COMPLETE	1	
087	419008-7	FIX GUIDE	2	
088	423366-5	CUSHION PLATE	1	
089	324739-4	CRANK SHAFT	1	
090	211418-2	BALL BEARING 6006LLU	1	
091	254229-2	KEY 5	2	
092	226646-6	HELICAL GEAR 47	1	
093	227176-0	SPUR GEAR 24	1	
094	961102-6	RETAINING RING S-22	1	
095	253843-1	FLAT WASHER 12	1	
096	421999-0	SEAL RING	1	
097	158178-4	GEAR HOUSING COMPLETE	1	
098	922341-3	HEX. SOCKET HEAD BOLT M6X25	2	
099	125374-9	TORQUE LIMITER ASS'Y	1	
100	419796-6	HANDLE COVER	1	
101	265995-6	TAPPING SCREW 4X18	1	
102	650567-4	SWITCH TG73B-1	1	
103	154626-1	SWITCH HOLDER COMPLETE	1	
104	419025-7	SWITCH LEVER	1	
105	313124-6	SHOULDER SLEEVE 6	2	
106	266041-8	TAPPING SCREW 5X25	2	
107	266041-8	TAPPING SCREW 5X25	6	
108	419798-2	HANDLE	1	
109	424001-8	DUST COVER	1	
110	419783-5	DUST COVER SUPPORT	1	
111	863353-6	HR5211C NAME PLATE	1	
112	419797-4	HANDLE BASE	1	
113	253807-5	FLAT WASHER 5	2	
114	266211-9	TAPPING SCREW 5X40	2	
115	233434-4	COMPRESSION SPRING 11	1	
116	419013-4	SPRING GUIDE	1	
117	419793-2	CRANK HOUSING COVER	1	
118	631727-7	CONTROLLER	1	
119	266192-7	TAPPING SCREW 4X14	1	
120	638510-3	LEAD UNIT	1	
121	687169-3	STRAIN RELIEF	1	
122	266192-7	TAPPING SCREW 4X14	1	

SPARE PARTS LIST

MODEL NO. HR5211C

ITEM	PART NO.	DESCRIPTION	QTY	NOTE
123	419024-9	CORD CLAMP BASE	1	
124	265995-6	TAPPING SCREW 4X18	4	
125	266192-7	TAPPING SCREW 4X14	1	
126	419774-6	LENS	1	
127	682560-0	CORD GUARD 10	1	
128	695123-3	POWER SUPPLY CORD 1.5-2-4.0	1	
129	266041-8	TAPPING SCREW 5X25	3	
130	419790-8	REAR COVER	1	
131	252178-7	HEX. NUT M8-12	1	
132	253165-9	FLAT WASHER 8	1	
133	240016-5	FAN 90	1	
134	419782-7	FAN GUIDE	1	
135	194412-8	CARBON BRUSH CB-171	1	
136	638447-4	BRUSH HOLDER UNIT	1	
137	419795-8	MOTOR HOUSING	1	
138	636303-2	FIELD 220-240V	1	
139	266095-5	TAPPING SCREW 5X55	2	
140	210059-1	BALL BEARING 6000DDW	1	
141	681642-5	INSULATION WASHER	1	
142	516993-6	ARMATURE ASS'Y 220-240V INC. 140,141,145	1	
143	267025-9	FLAT WASHER 15	1	
144	211238-4	BALL BEARING 6202LLU	1	
145	331596-3	SLEEVE 12	1	
146	213231-4	OIL SEAL 15	1	
147	419788-5	BAFFLE PLATE	1	
148	819362-3	CLEAR LABEL	1	
A01	158131-0	GRIP 36 COMPLETE	1	
A02	158273-0	PLASTIC CARRYING CASE COMPLETE	1	
A03	181573-3	GREASE VESSEL 93G	1	
A04	135269-8	SIDE HANDLE 82 ASS'Y	1	
A05	265701-9	SCREW M6X14	1	
A06	266163-4	CUP SQUARE NECK BOLT M8X80	1	
A07	321248-4	DEPTH GAUGE	1	
A08	344492-6	PLATE	1	
A09	345780-4	GRIP SPRING 82	1	
A10	419792-4	SIDE GRIP BASE 82	1	
A11	443122-7	CLOTH	1	
A12	931302-2	HEX. NUT M6	1	
A13	805238-0	HR5211C MODEL NO. LABEL	1	